

K-Commander® Exceed Series P

Flexible, All-Direction Conveyor Belt Tracker

Conveyor belt misalignment is the main cause of many conveyor problems, and over time if left unresolved can contribute to reduced productivity, material spillage and irreversible damage to conveyor structures and components.

The **K-Commander® Exceed Series P** features flexible 360° rotational capability for correct and optimal conveyor belt tracking. The separate axial and rotational function mean the double axis pivot bush can be utilised to achieve a completely free 360° pivot.

The K-Commander® Exceed Series P has been designed with two key stages. The first stage focuses on the inner shell which contains the shaft and an engineered pivoting bush allowing the axial movement of the tracker. The inner shell is protected by a flexible EPDM rubber boot.

The second stage focuses on the roller bearings, which allows the rotational movement of the tracker. The roller bearings connect the inner shell and the outer shell and are protected by a labyrinth seal.

The added benefits of lagging on the K-Commander® Exceed Series P means the lagging can be replaced or reconditioned to extend the wear life of the conveyor belt tracker.

In comparison to the conventional single axis pivots that restrict other belt trackers to the one plane of rotation, the K-Commander® Exceed Series P can be installed either above or below the conveyor belt and in reversing applications.

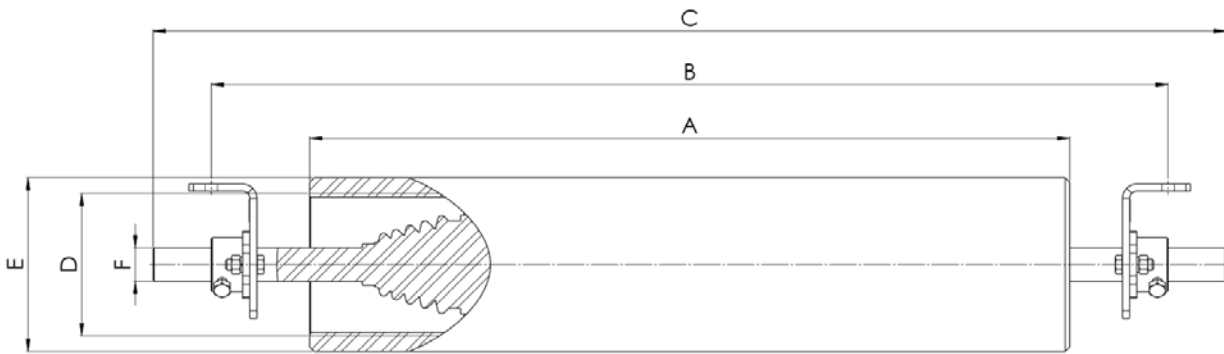
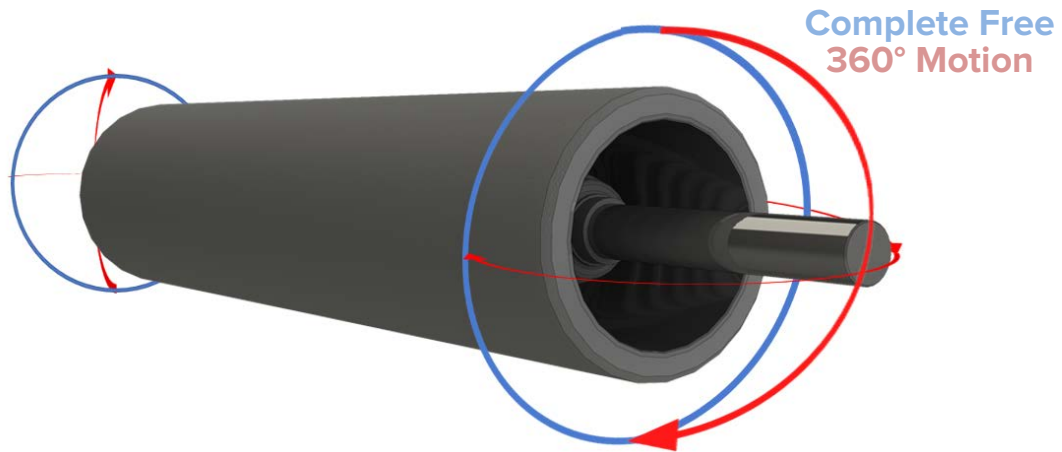


Key Features & Benefits:

- Rubber lagging provides extreme wear resistance.
- Low friction pivot design allows for instant correction of even minor misalignment.
- Tracker pivot is intrinsically reversible.
- Cylindrical (non tapered) design extends service life and leads to uniform wear.
- Adjustable brackets allow for a more adaptive installation.
- Lagging can be easily replaced / reconditioned.
- Internalised design is suitably protected from dust and sand.



K-Commander® Exceed Series P



Belt Width mm	A mm	B mm	C mm	D mm	E mm	F mm	Description	Part Number P-Series
450-500	550	760-900	900	159	194	38	Self Centring Idler to suit 450-500BW	K-TRA-SC-450/500-P
600-650	700	840-1050	1050	159	194	38	Self Centring Idler to suit 600-650BW	K-TRA-SC-600/650-P
750-800	850	990-1200	1200	159	194	38	Self Centring Idler to suit 750-800BW	K-TRA-SC-750/800-P
900	950	1090-1300	1300	159	194	38	Self Centring Idler to suit 900BW	K-TRA-SC-900-P
1000-1050	1100	1240-1450	1450	159	194	38	Self Centring Idler to suit 1000-1050BW	K-TRA-SC-1000/1050-P
1200	1250	1390-1600	1600	159	194	38	Self Centring Idler to suit 1200BW	K-TRA-SC-1200-P
1400	1500	1650-1900	1900	194	224	50	Self Centring Idler to suit 1400BW	K-TRA-SC-1400-P
1600	1700	1850-2100	2100	194	224	50	Self Centring Idler to suit 1600BW	K-TRA-SC-1600-P
1800	1900	2050-2300	2300	194	224	50	Self Centring Idler to suit 1800BW	K-TRA-SC-1800-P
2000	2100	2250-2500	2500	194	224	50	Self Centring Idler to suit 2000BW	K-TRA-SC-2000-P

Issue 202007

Page 2



www.kinder.com.au

Kinder Australia Pty Ltd

P | +61 3 8587 9111 F | +61 3 8587 9101 E | sales@kinder.com.au

26 Canterbury Rd, Braeside VIC 3195 (PO Box 1026, Braeside VIC 3195)

Subject to © Kinder Australia Pty Ltd

abn 28 006 489 238



Recommended Conveyor Belt Tracker Placement Diagram

